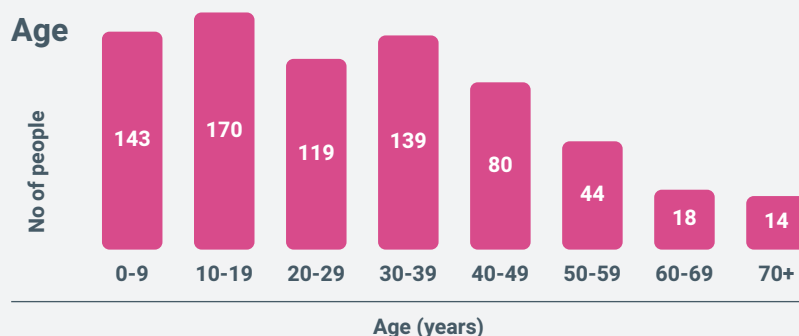
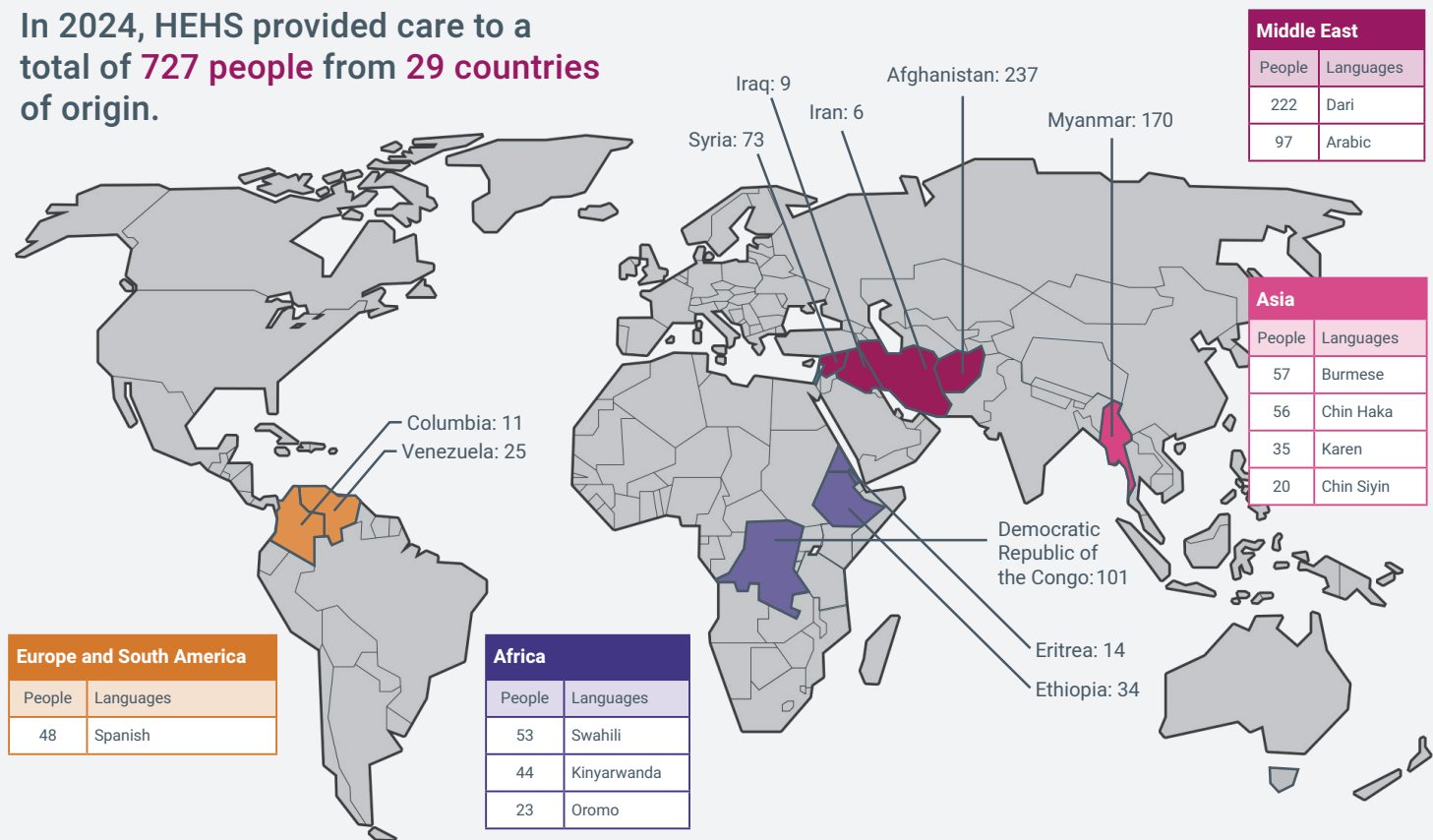




# Humanitarian Entrant Health Service 2024

The Humanitarian Entrant Health Service (HEHS) is a specialist public health program which provides holistic health assessment for all humanitarian entrants (refugees) who are resettled in Western Australia (WA) under the Commonwealth Government's Humanitarian Program and Special Humanitarian Program.

In 2024, HEHS provided care to a total of **727 people** from **29 countries** of origin.



## Place of residence by health service area:



## Screening outcomes (prevalence):

Vitamin D deficiency	51.9%
Iron deficiency	17.9%
Positive QuantiFERON	16.8%
Vitamin B12 deficiency	13.6%
Schistosomiasis	12%
Strongyloides	10%
Hypocalcaemia*	4.4%
Hepatitis B	2.3%
Hepatitis C	1%
Malaria	0.4%
Syphilis	0.3%
HIV	0%
Active TB	0%

\*% of those aged 0-19

## Chronic disease screening:

Elevated ACR or decreased eGFR	3.6%
Elevated HbA1C 6-6.4%	2.6%
Diabetes, HbA1C >6.5%	3.4%
Dyslipidaemia	12.4%

For further information contact:

HEHS@health.wa.gov.au or 08 9222 8500